

Grade 10
Parent Workshop
Mr. Mark Curtiss
Ms. Elizabeth Hammer

March 9, 2017

ACADEMICS

- ▶ Programming
- ▶ Choosing Appropriate Courses/
Strength of Curriculum
- ▶ Electives
- ▶ GC Tech
- ▶ GPA/Weighting
- ▶ Transcript

ACADEMIC INTERVENTION SERVICES

- ▶ Extra Help
- ▶ Peer Tutoring through the National Honor Society

GETTING INVOLVED

- ▶ Clubs/Athletics
- ▶ Leadership Positions
- ▶ National Honor Society
- ▶ Community Activities

PSAT 2016

Interpreting Your Results

- ▶ Total PSAT score is out of 1520 points
- ▶ Evidence Based Reading & Writing (EBRW) is out of 760 points
- ▶ Math score is out of 760 points
- ▶ Understanding Percentiles
- ▶ National Merit Scholarship Corporation (NMSC) Index
- ▶ Visit <https://collegereadiness.collegeboard.org/psat-nmsqt-psat-10/scores/understanding-scores> and click “Student Score Reports” to view an online tutorial explaining PSAT score report in detail

How to Use Your PSAT as a resource for future

- ▶ PSAT score reports give you feedback on areas of strength and recommendations for areas to work on
- ▶ Students should use itemized Question-Level Feedback and their test booklets to look at specific questions answered incorrectly to focus future preparation
- ▶ Itemized score report and test booklet are great study tools to prepare students for future PSAT/SAT exams

Standardized Tests

PSAT / SAT / ACT Exams

- ▶ All college bound 11th graders should take PSAT exam in October 2017. Registration letters mailed home in Sept.
- ▶ We recommend that students take at least one SAT and one ACT in spring of junior year
- ▶ Benefit of taking exam(s) multiple times
- ▶ Test prep opportunities offered through district - Kaplan prep classes & ACT Catalyst Bootcamp - also links to free prep available on district website
- ▶ SAT Subject Tests - 1 hour exams, subject specific - high level, recommended for students in AP/honors classes
- ▶ Visit www.collegeboard.org for more information on PSAT/SAT/SAT Subject tests and to register for an SAT exam
- ▶ Visit www.actstudent.org for more information on ACT and to register for an ACT exam.

INTRODUCTION TO



NAVIANCE

Family Connection

Naviance for Sophomores

- ▶ Career Interest Inventory/Cluster Finder
- ▶ College Searches
- ▶ Exploring Careers
- ▶ Registering students

family connection

colleges

careers

about me



my planner

links

- [college planning](#)
- [act](#)
- [college board](#)
- [common application](#)
- [cuny](#)
- [fafsa](#)
- [fast web](#)
- [guidance](#)
- [levittown](#)
- [ncaa eligibility ctr](#)
- [peterson's](#)
- [sat](#)
- [scholarship info](#)
- [suny](#)

Division Avenue HS

Welcome to Naviance, the college search, planning and tracking tool.
If you have questions or are having difficulty using the program,
please visit the [Guidance and Counseling Center](#).

Get the mobile app
Naviance Student



Available on the
App Store

You have [no new messages](#)

[document library](#)



Division Avenue High Sch

120 Division Ave
Levittown NY 11756-2
p: (516) 520-8

family connection

home

colleges

careers

about me



my planner

search for careers:

Go

MORE SEARCH OPTIONS >>

explore careers

> [favorite careers & clusters](#)

> [explore careers & clusters](#)

what are my interests?

> [cluster finder](#)

> [career interest profiler](#)

roadtrip nation interview archive



Roadtrip Nation sends young people on Roadtrips to interview Leaders who have built their lives around their interests.

WHAT'S IN THE ARCHIVE?

3 552 VIDEOS ON

or careers:

SEARCH OPTIONS >>

careers

careers &

careers &

my

finder

interest profiler

cluster finder :: identify a top career cluster

⇒ You have not yet started the survey. Click "let's begin" below...

1. start

2. activities

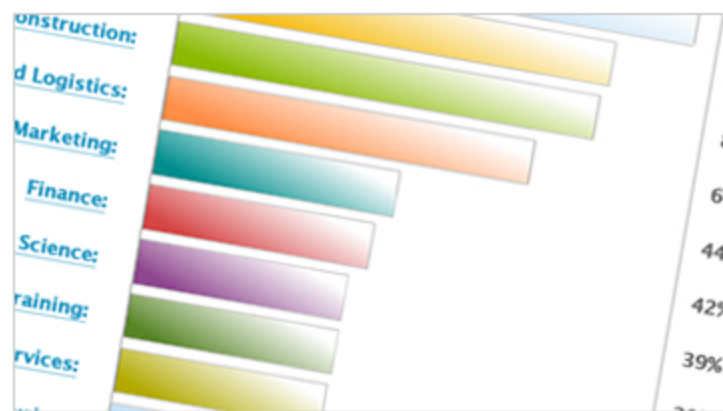
3. personal qualities

4. school subjects

5. results

Find career clusters that match your interests and personal qualities.

The Cluster Finder will help you learn what career clusters may be a good match for you based on activities that interest you, personal qualities that you have and subjects that you enjoy studying in school.



Activities

Select activities you enjoy doing now and would like to do in the future.



Personal Qualities

Select personal qualities that best describe you.



School Subjects

Select subjects you enjoy studying in school.



Results

We'll show you list of the top clusters that are likely to be a good match.

click the button to get started!

NCAA - College Athletics

- ▶ Students must communicate with their guidance counselor if they are interested in playing college athletics
- ▶ NCAA Division I and II require 16 core academic courses to be eligible
- ▶ NCAA determines which Levittown academic courses are approved, visit www.eligibilitycenter.org for a list of our district's approved courses
- ▶ GPA and test scores are important for NCAA Division I and II Initial-Eligibility Requirements

JUNIOR YEAR TIMELINE

- ▶ High School College Fairs October 2017
- ▶ PSAT October 2017
- ▶ College Information Night Feb. 2018
- ▶ Junior College Planning Meetings - March - June 2018
- ▶ NCA/WSCA College Fairs - Spring 2018

JUNIOR YEAR TIMELINE

Continued

- ▶ Research and visit college campuses
- ▶ SAT Subject Examination - May - June 2018
- ▶ SAT Reasoning Examination - March - June 2018
- ▶ ACT Plus Writing Examination - April - June 2018

THANK YOU

The background features a series of overlapping, semi-transparent triangles in various shades of blue and red. These shapes are positioned primarily on the right side of the frame, creating a dynamic, layered effect against the white background.

A PARENT TUTORIAL

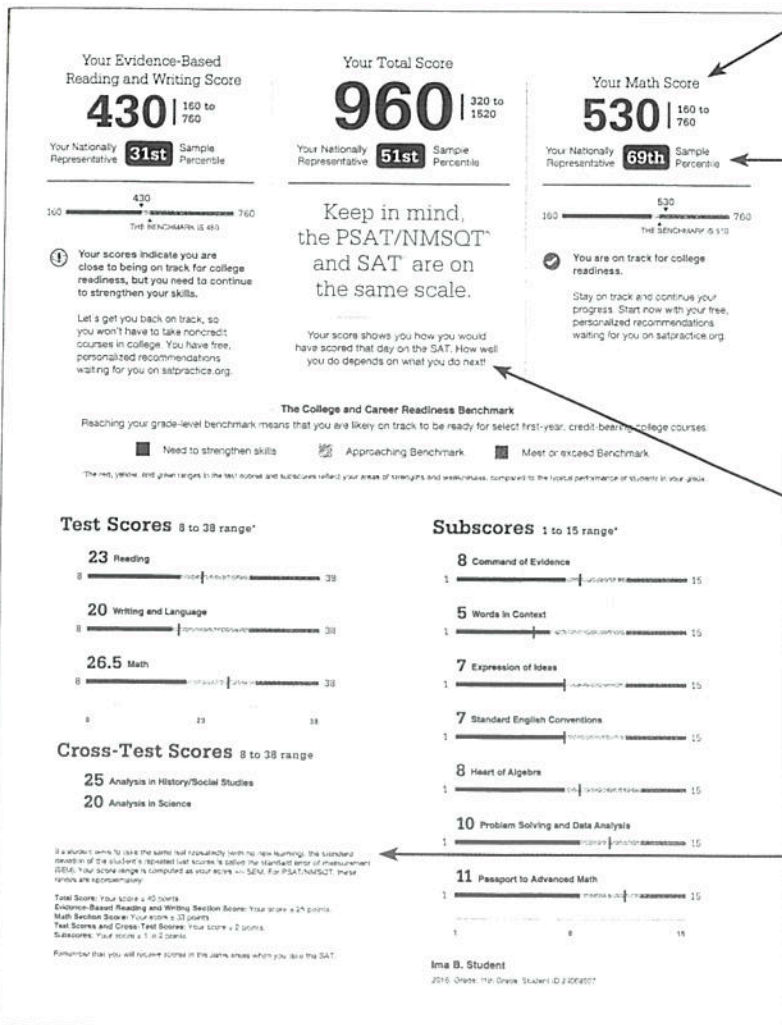
Understanding 2016 PSAT/NMSQT® Results

A Case Study: Ima B. Student's PSAT/NMSQT® Score Report

Take a look at Ima B. Student's sample score report below and on the back. Use the information to help you interpret your student's PSAT/NMSQT® Score Report.

What Are Ima's Scores?

Ima's Evidence-Based Reading and Writing score is 430 and Math is 530. In Evidence-Based Reading and Writing, Ima's score is approaching the benchmark (explained on the report), but she is not quite on track for college readiness. In Math, however, Ima is exceeding the benchmark and is on track. Test scores, cross-test scores, and subscores can give Ima a better understanding of areas to work on.



What Are Her Score Percentiles?

Since Ima is in the 11th grade, the percentiles compare her scores with those of all 11th graders in the nation. Ima scored as well as or better in Evidence-Based Reading and Writing than 31% of a nationally representative group of juniors. In Math, she scored as well as or better than 69% of a nationally representative group of juniors. Additional percentiles are available in Ima's online score report.

How Will Ima Do on the SAT®?

The PSAT/NMSQT and SAT are scored on a common scale; therefore if Ima had taken the SAT instead of the PSAT/NMSQT on the same test date, she would have received the same score. When Ima takes the SAT, she will likely have had additional learning from school and practice. Her PSAT/NMSQT results can help Ima focus her efforts in high school to be better prepared for the SAT.

What Are Her Score Ranges?

No test measures precisely what someone knows, and many factors can affect results. That is why test makers think of each score as a range that extends from a few points below to a few points above the score earned.

National Merit Scholarship Corporation

Your NMSC Selection Index
139

NMSC uses a Selection Index based on PSAT/NMSQT scores as an overall score of students who enter its scholarship program. To calculate your Selection Index, we take the sum of your Reading, Writing and Language, and Math Test scores.

Eligibility Information
If your Selection Index is 139, you qualify for National Merit Scholarship Program recognition. You will be notified by mail.

Entry Requirements
Minimum per program (see www.nationalmerit.org)

High school student
YES

Not a complete high school senior (unless a challenge)

PSAT

Not in the United States (if a U.S. citizen)

U.S. Citizenship
YES

Your Scores: Next Steps

Additional skills and improvement suggestions can be found in your online score report.

Your score indicates that you are already likely able to:

- Draw reasonable conclusions from somewhat challenging texts
- Describe the overall structure of a somewhat challenging text
- Identify claims and counterclaims explicitly stated in a somewhat challenging passage

Reading Test
23
8 to 38

Improve your skills by focusing on the following suggestions:

- Draw reasonable inferences and logical conclusions from challenging texts
- Analyze a claim or premise presented qualitatively in such forms as graphs, tables, and charts and relate that information to information presented in somewhat challenging text
- Determine how the selection of specific words shapes meaning and tone in a challenging passage

Writing and Language Test

- Revise text as needed to improve the effectiveness of content, appropriateness of word choice within a somewhat challenging text
- Revise or add information or details to a piece of text to support claims or points in a somewhat challenging text
- Use a variety of sentence structures to accomplish a rhetorical purpose such as persuading an audience
- Revise text as needed to improve the effectiveness or content, appropriateness of word choices within a challenging text

Math Test
26.5
8 to 38

- Interpret a linear inequality in one variable with rational coefficients that represents a constraint. Sketch the equation of a line in the context of the situation (when a linear model is appropriate)
- Interpret sample statistics, understanding and using margin of error
- Solve and interpret a quadratic function or equation and represents a context and requires multiple steps
- Calculate and interpret frequency distributions using tables and other representational methods

Get more next steps online
studentscores.collegeboard.org

SAT Practice
Connect to Khan Academy for FREE, world-class SAT practice on satpractice.org

AP and Course Work
See which AP courses may be good matches for you.

Register for the SAT
Select an SAT test date and register for a test.

Will Ima Be Able to Enter the National Merit® Scholarship Program?

Ima has an NMSC Selection Index of 139, which is double the sum of her Reading (23), Writing and Language (20), and Math (26.5) Test scores. This index is used by National Merit Scholarship Corporation to designate students to be recognized in its National Merit Scholarship Program.

If an asterisk had appeared next to Ima's score, it would mean she does not meet entry requirements for the program. In this case, Ima meets entry requirements, but her score is not likely to take her further in the competition for awards. For entry requirements and information on how the competition works, see the *2016 PSAT/NMSQT Student Guide* or visit www.nationalmerit.org.

How Can Ima Improve Her Academic Skills?

Your Scores: Next Steps are based on her test scores, and what general skills similarly performing students understand. Ima can see which skills she performed well on and which she needs to improve. When she goes online and logs in to the full report online, she can see additional skills and improvement steps. Ima can also link her account to Khan Academy® for personalized practice recommendations.

Score Report

What Are the Next Steps for Ima?

Under **Get more next steps online**, Ima is directed to studentscores.collegeboard.org to learn how to prepare for the SAT and see her potential for challenging AP® course work.

When Should Ima Take the SAT?

As a junior, Ima should begin planning when she will take the SAT. Most students take the SAT for the first time in their junior year. By planning now, Ima can ensure she has adequate time to practice for the SAT. She can take advantage of practice resources by visiting studentscores.collegeboard.org.

How Can Ima Learn from Her Answers?

Using her score report with her PSAT/NMSQT test booklet, Ima can see the actual questions, correct answers, and difficulty level alongside her own answers. She can use her online score report to review the questions she answered incorrectly or omitted, and to see detailed answer explanations.

Your Question-Level Feedback

Question #	Correct	Your Answer	Difficulty	Subscore	Cross-Test Score
1	A	✓	WLC	80	80
2	B	✓	WLC	80	80
3	B	✓	WLC	80	80
4	B	✓	WLC	80	80
5	C	✓	WLC	80	80
6	D	✓	WLC	80	80
7	A	✓	WLC	80	80
8	B	✓	WLC	80	80
9	D	✓	WLC	80	80
10	A	✓	WLC	80	80
11	D	✓	WLC	80	80
12	B	✓	WLC	80	80
13	D	✓	WLC	80	80
14	A	✓	WLC	80	80
15	C	✓	WLC	80	80
16	B	✓	WLC	80	80
17	D	✓	WLC	80	80
18	D	✓	WLC	80	80
19	A	✓	WLC	80	80
20	C	✓	WLC	80	80
21	B	✓	WLC	80	80
22	D	✓	WLC	80	80
23	B	✓	WLC	80	80
24	D	✓	WLC	80	80
25	C	✓	WLC	80	80
26	A	✓	WLC	80	80
27	A	✓	WLC	80	80
28	A	✓	WLC	80	80
29	D	✓	WLC	80	80
30	B	✓	WLC	80	80
31	D	✓	WLC	80	80
32	A	✓	WLC	80	80
33	B	✓	WLC	80	80
34	B	✓	WLC	80	80
35	C	✓	WLC	80	80
36	D	✓	WLC	80	80
37	C	✓	WLC	80	80
38	C	✓	WLC	80	80
39	C	✓	WLC	80	80
40	C	✓	WLC	80	80
41	B	✓	WLC	80	80
42	B	✓	WLC	80	80
43	A	✓	WLC	80	80
44	A	✓	WLC	80	80
45	A	✓	WLC	80	80
46	D	✓	WLC	80	80
47	C	✓	WLC	80	80

Question #	Correct	Your Answer	Difficulty	Subscore	Cross-Test Score
1	D	✓	WLC	80	80
2	B	✓	WLC	80	80
3	C	✓	WLC	80	80
4	A	✓	WLC	80	80
5	B	✓	WLC	80	80
6	B	✓	WLC	80	80
7	A	✓	WLC	80	80
8	B	✓	WLC	80	80
9	A	✓	WLC	80	80
10	D	✓	WLC	80	80
11	D	✓	WLC	80	80
12	B	✓	WLC	80	80
13	C	✓	WLC	80	80
14	C	✓	WLC	80	80
15	D	✓	WLC	80	80
16	B	✓	WLC	80	80
17	B	✓	WLC	80	80
18	A	✓	WLC	80	80
19	B	✓	WLC	80	80
20	C	✓	WLC	80	80
21	A	✓	WLC	80	80
22	A	✓	WLC	80	80
23	A	✓	WLC	80	80
24	C	✓	WLC	80	80
25	C	✓	WLC	80	80
26	A	✓	WLC	80	80
27	A	✓	WLC	80	80
28	65	✓	WLC	80	80
29	5, 19	✓	WLC	80	80
30	1788	✓	WLC	80	80
31	84	✓	WLC	80	80

Math Test—No Calculator

Question #	Correct	Your Answer	Difficulty	Subscore	Cross-Test Score
1	D	✓	WLC	80	80
2	A	✓	WLC	80	80
3	B	✓	WLC	80	80
4	C	✓	WLC	80	80
5	C	✓	WLC	80	80
6	B	✓	WLC	80	80
7	A	✓	WLC	80	80

Key

- ✓ Correct
- ✗ Incorrect
- WLC Words in Context
- SOI Expression of Ideas
- SEC Standard English Conventions
- HGA Heart of Argument
- PSD Problem Solving and Data Analysis
- PAM Passport to Advanced Math

Cross-Test Scores

- HSS Analysis in History/Social Studies
- SCI Analysis in Science

Score Report

NCAA ELIGIBILITY CENTER QUICK REFERENCE GUIDE



NCAA Division I Initial-Eligibility Requirements

Core Courses: (16)

- **Initial full-time collegiate enrollment *before* August 1, 2016:**
 - **Sixteen (16) core courses** are required (see chart below for subject-area requirements).
- **Initial full-time collegiate enrollment *on or after* August 1, 2016:**
 - **Sixteen (16) core courses** are required (see chart below for subject-area requirements).
 - Ten (10) core courses completed before the seventh semester; seven (7) of the 10 must be in English, math or natural/physical science.
 - These courses/grades are "locked in" at start of the seventh semester (cannot be repeated for grade-point average [GPA] improvement to meet initial-eligibility requirements for competition).
 - *Students who do not meet core-course progression requirements may still be eligible to receive athletics aid and practice in the initial year of enrollment by meeting academic redshirt requirements (see below).*

Test Scores: (ACT/SAT)

- Students must present a corresponding test score and core-course GPA on the sliding scale (see Page No. 2).
 - **SAT:** critical reading and math sections.
 - Best subscore from each section is used to determine the SAT *combined* score for initial eligibility.
 - **ACT:** English, math, reading and science sections.
 - Best subscore from each section is used to determine the ACT *sum* score for initial eligibility.
- All ACT and SAT attempts *before* initial full-time collegiate enrollment may be used for initial eligibility.
- **Enter 9999 during ACT or SAT registration to ensure the testing agency reports your score directly to the NCAA Eligibility Center. *Test scores on transcripts will not be used.***

Core Grade-Point Average:

- Only *core courses* that appear on the high school's List of NCAA Courses on the NCAA Eligibility Center's website (www.eligibilitycenter.org) will be used to calculate your core-course GPA. Use this list as a guide.
- **Initial full-time collegiate enrollment *before* August 1, 2016:**
 - Students must present a corresponding test score (ACT sum score or SAT combined score) and core-course GPA (minimum 2.000) on Sliding Scale A (see Page No. 2).
 - Core-course GPA is calculated using the **best 16 core courses** that meet subject-area requirements.
- **Initial full-time collegiate enrollment *on or after* August 1, 2016:**
 - Students must present a corresponding test score (ACT sum score or SAT combined score) and core-course GPA (minimum 2.300) on Sliding Scale B (see Page No. 2).
 - Core-course GPA is calculated using the **best 16 core courses** that meet both progression (10 before seventh semester; seven in English, math or science; "locked in") and subject-area requirements.

DIVISION I Core-Course Requirement (16)	
4	years of English
3	years of math (Algebra I or higher)
2	years of natural/physical science (1 year of lab if offered)
1	year of additional English, math or natural/physical science
2	years of social science
4	years of additional courses (any area above, foreign language or comparative religion/philosophy)

DIVISION I – 2016 Qualifier Requirements	
<i>*Athletics aid, practice, and competition</i>	
•	16 core courses <ul style="list-style-type: none"> ○ Ten (10) core courses completed before the start of seventh semester. Seven (7) of the 10 must be in English, math or natural/physical science. <ul style="list-style-type: none"> ▪ "Locked in" for core-course GPA calculation.
•	Corresponding test score (ACT sum score or SAT combined score) and core-course GPA (minimum 2.300) on Sliding Scale B (see Page No. 2).
•	Graduate from high school.

DIVISION I – 2016 Academic Redshirt Requirements	
<i>*Athletics aid and practice (no competition)</i>	
•	16 core courses <ul style="list-style-type: none"> ○ No grades/credits "locked in" (repeated courses after the seventh semester begins may be used for initial eligibility).
•	Corresponding test score (ACT sum score or SAT combined score) and core-course GPA (minimum 2.000) on Sliding Scale B (see Page No. 2).
•	Graduate from high school.

Sliding Scale A		
Use for Division I prior to August 1, 2016		
NCAA DIVISION I SLIDING SCALE		
Core GPA	SAT	ACT Sum
Verbal and Math ONLY		
3.550 & above	400	37
3.525	410	38
3.500	420	39
3.475	430	40
3.450	440	41
3.425	450	41
3.400	460	42
3.375	470	42
3.350	480	43
3.325	490	44
3.300	500	44
3.275	510	45
3.250	520	46
3.225	530	46
3.200	540	47
3.175	550	47
3.150	560	48
3.125	570	49
3.100	580	49
3.075	590	50
3.050	600	50
3.025	610	51
3.000	620	52
2.975	630	52
2.950	640	53
2.925	650	53
2.900	660	54
2.875	670	55
2.850	680	56
2.825	690	56
2.800	700	57
2.775	710	58
2.750	720	59
2.725	730	59
2.700	730	60
2.675	740-750	61
2.650	760	62
2.625	770	63
2.600	780	64
2.575	790	65
2.550	800	66
2.525	810	67
2.500	820	68
2.475	830	69
2.450	840-850	70
2.425	860	70
2.400	860	71
2.375	870	72
2.350	880	73
2.325	890	74
2.300	900	75
2.275	910	76
2.250	920	77
2.225	930	78
2.200	940	79
2.175	950	80
2.150	960	80
2.125	960	81
2.100	970	82
2.075	980	83
2.050	990	84
2.025	1000	85
2.000	1010	86

Sliding Scale B		
Use for Division I beginning August 1, 2016		
NCAA DIVISION I SLIDING SCALE		
Core GPA	SAT	ACT Sum
Verbal and Math ONLY		
3.550	400	37
3.525	410	38
3.500	420	39
3.475	430	40
3.450	440	41
3.425	450	41
3.400	460	42
3.375	470	42
3.350	480	43
3.325	490	44
3.300	500	44
3.275	510	45
3.250	520	46
3.225	530	46
3.200	540	47
3.175	550	47
3.150	560	48
3.125	570	49
3.100	580	49
3.075	590	50
3.050	600	50
3.025	610	51
3.000	620	52
2.975	630	52
2.950	640	53
2.925	650	53
2.900	660	54
2.875	670	55
2.850	680	56
2.825	690	56
2.800	700	57
2.775	710	58
2.750	720	59
2.725	730	60
2.700	740	61
2.675	750	61
2.650	760	62
2.625	770	63
2.600	780	64
2.575	790	65
2.550	800	66
2.525	810	67
2.500	820	68
2.475	830	69
2.450	840	70
2.425	850	70
2.400	860	71
2.375	870	72
2.350	880	73
2.325	890	74
2.300	900	75
2.299	910	76
2.275	910	76
2.250	920	77
2.225	930	78
2.200	940	79
2.175	950	80
2.150	960	81
2.125	970	82
2.100	980	83
2.075	990	84
2.050	1000	85
2.025	1010	86
2.000	1020	86

For more information, visit www.eligibilitycenter.org or www.2point3.org.

NCAA ELIGIBILITY CENTER QUICK REFERENCE GUIDE



Division II Initial-Eligibility Requirements

Core Courses

- **Division II currently requires 16 core courses.** See the chart below.
- **Beginning August 1, 2018**, to become a full or partial qualifier for Division II, all college-bound student-athletes must complete the 16 core-course requirement.

Test Scores

- **Division II** currently requires a minimum SAT score of 820 or an ACT sum score of 68. **Beginning August 1, 2018**, Division II will use a sliding scale to match test scores and core-course grade-point averages (GPA). The sliding scale for those requirements is shown on Page No. 2 of this sheet.
- The SAT score used for NCAA purposes includes **only** the critical reading and math sections. The writing section of the SAT is not used.
- The ACT score used for NCAA purposes is a **sum** of the following four sections: English, mathematics, reading and science.
- **When you register for the SAT or ACT, use the NCAA Eligibility Center code of 9999 to ensure all SAT and ACT scores are reported directly to the NCAA Eligibility Center from the testing agency. Test scores that appear on transcripts will not be used.**

Grade-Point Average

- Be sure to look at your high school's List of NCAA Courses on the NCAA Eligibility Center's website (www.eligibilitycenter.org). Only courses that appear on your school's approved List of NCAA Courses will be used in the calculation of the core GPA. Use the list as a guide.
- The current **Division II** core GPA requirement is a minimum of 2.000. **Division II** core GPA required to be eligible for competition on or after August 1, 2018, is 2.200 (corresponding test-score requirements are listed on the Sliding Scale on Page No. 2 of this sheet).
- The minimum **Division II** core GPA required to receive athletics aid and practice as a partial qualifier on or after August 1, 2018, is 2.000 (corresponding test-score requirements are listed on the Sliding Scale on Page No. 2 of this sheet).
- Remember, the NCAA core GPA is calculated using NCAA core courses only.

DIVISION II 16 Core Courses

- 3 years of English.
- 2 years of mathematics (Algebra I or higher).
- 2 years of natural/physical science (1 year of lab if offered by high school).
- 3 years of additional English, mathematics or natural/physical science.
- 2 years of social science.
- 4 years of additional courses (from any area above, foreign language or comparative religion/philosophy).

DIVISION II COMPETITION SLIDING SCALE		
<i>Use for Division II beginning August 1, 2018</i>		
Core GPA	SAT <small>Verbal and Math ONLY</small>	ACT Sum
3.300 & above	400	37
3.275	410	38
3.250	420	39
3.225	430	40
3.200	440	41
3.175	450	41
3.150	460	42
3.125	470	42
3.100	480	43
3.075	490	44
3.050	500	44
3.025	510	45
3.000	520	46
2.975	530	46
2.950	540	47
2.925	550	47
2.900	560	48
2.875	570	49
2.850	580	49
2.825	590	50
2.800	600	50
2.775	610	51
2.750	620	52
2.725	630	52
2.700	640	53
2.675	650	53
2.650	660	54
2.625	670	55
2.600	680	56
2.575	690	56
2.550	700	57
2.525	710	58
2.500	720	59
2.475	730	60
2.450	740	61
2.425	750	61
2.400	760	62
2.375	770	63
2.350	780	64
2.325	790	65
2.300	800	66
2.275	810	67
2.250	820	68
2.225	830	69
2.200	840 & above	70 & above

DIVISION II PARTIAL QUALIFIER SLIDING SCALE		
<i>Use for Division II beginning August 1, 2018</i>		
Core GPA	SAT <small>Verbal and Math ONLY</small>	ACT Sum
3.050 & above	400	37
3.025	410	38
3.000	420	39
2.975	430	40
2.950	440	41
2.925	450	41
2.900	460	42
2.875	470	42
2.850	480	43
2.825	490	44
2.800	500	44
2.775	510	45
2.750	520	46
2.725	530	46
2.700	540	47
2.675	550	47
2.650	560	48
2.625	570	49
2.600	580	49
2.575	590	50
2.550	600	50
2.525	610	51
2.500	620	52
2.475	630	52
2.450	640	53
2.425	650	53
2.400	660	54
2.375	670	55
2.350	680	56
2.325	690	56
2.300	700	57
2.275	710	58
2.250	720	59
2.225	730	60
2.200	740	61
2.175	750	61
2.150	760	62
2.125	770	63
2.100	780	64
2.075	790	65
2.050	800	66
2.025	810	67
2.000	820 & above	68 & above

For more information, visit the NCAA Eligibility Center website at www.eligibilitycenter.org.